



Start-Up Guide

The purpose of this guide is to outline the method for powering the ND Formula hybrid car's low voltage system. This provides power to the Motherboard, Kelly controllers, and display screen.

1. Using the 12 Volt power supply pictured in Figure 1 below, connect red and black wires to the positive and negative terminals respectively.



Figure 1. The 12 Volt power supply used to power the low voltage system.

2. Connect the other end of the red and black wires to the "power points" on the vehicle test bench as shown in figure 2 below.

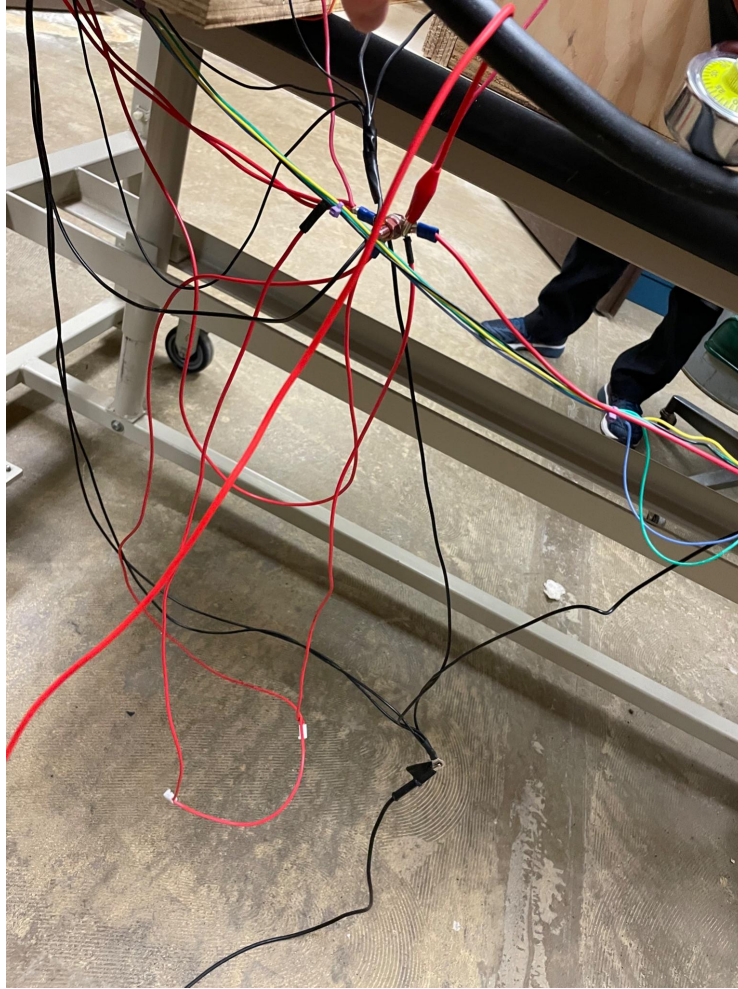


Figure 2. Connection to the vehicle's "power points" (The black wire towards the bottom is ground, the cluster of red wires connected with a screw is positive).

3. Plug in and turn on the 12 Volt power supply.
4. Switch the ON/OFF switch shown in figure 3 below (the leftmost switch) to the ON position. You should see the Nextion display turn on at this point.

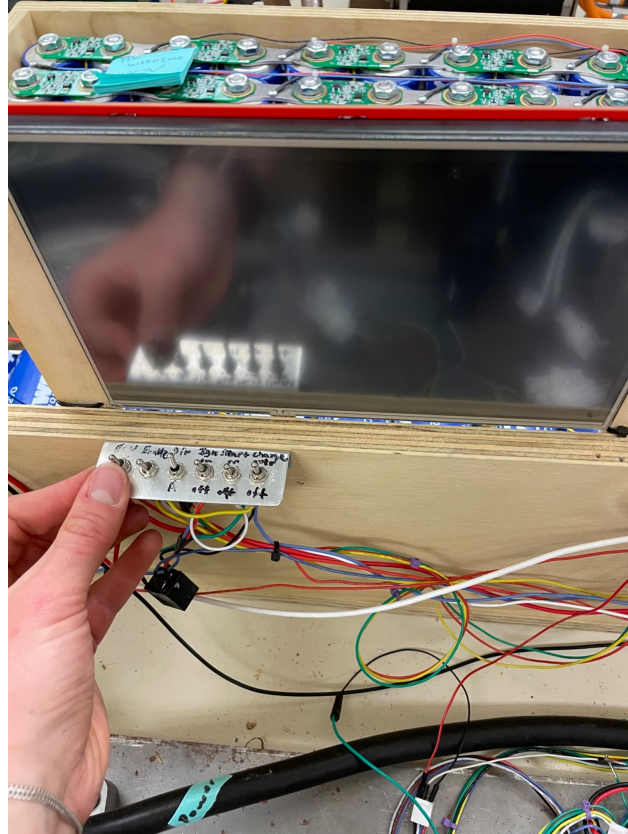


Figure 3. Switch Box

5. You have now successfully powered on the low voltage system. If there is enough charge in the capacitors you should be able to use the pedal to power the motors.
6. To unlock the keypad on the capacitor bank for the high voltage system, use the code 21-26-01. Unlocking this will allow you to turn the switch on the capacitors, allowing current to flow to the motors.